

Serious Harm Accident Summary 2000

Definitions

- **Serious Harm means death or**
 1. Any of the following conditions that amounts to or results in permanent loss of bodily function, or temporary severe loss of bodily function: respiratory disease, noise-induced hearing loss, neurological disease, cancer, dermatological disease, illness caused by exposure to infected material, decompression sickness, poisoning, vision impairment, chemical or hot metal burn of eye, penetrating wound of eye, bone fracture, laceration, crushing.
 2. Amputation of body part.
 3. Burns requiring referral to a specialist registered medical practitioner or specialist outpatient clinic.
 4. Loss of consciousness from lack of oxygen.
 5. Loss of consciousness, or acute illness requiring treatment by a registered medical practitioner, from absorption, inhalation, or ingestion, of any substance.
 6. Any harm that causes the person harmed to be hospitalised for a period of 48 hours or more within 7 days of the harm's occurrence.
- **SHIFR** means Serious Harm Injury Frequency Rate, which is the number of serious harm injuries per millions of hours worked.



TABLE 1: CLASSIFICATION BY SOURCE
ALL SURFACE MINES AND QUARRIES

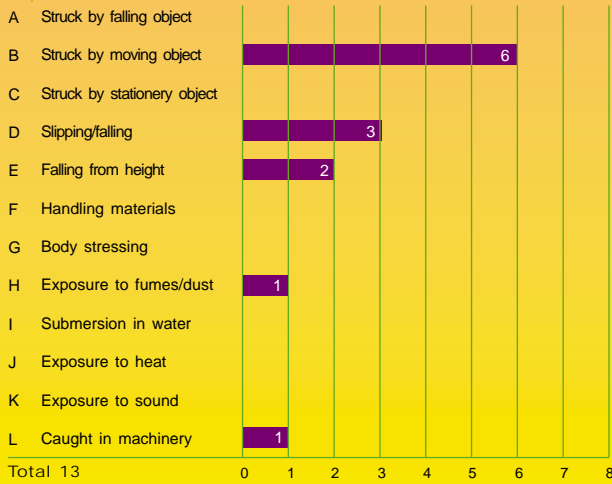


TABLE 2: CLASSIFICATION BY SOURCE
ALL MINES, COAL MINES, QUARRIES AND TUNNELS

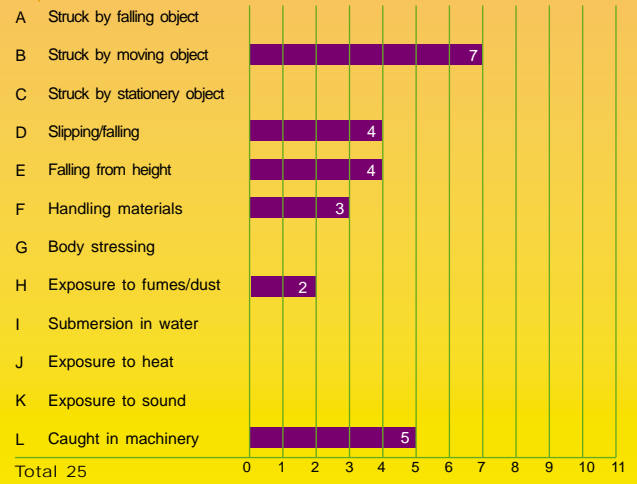


TABLE 3: ALL SURFACE MINES AND QUARRIES

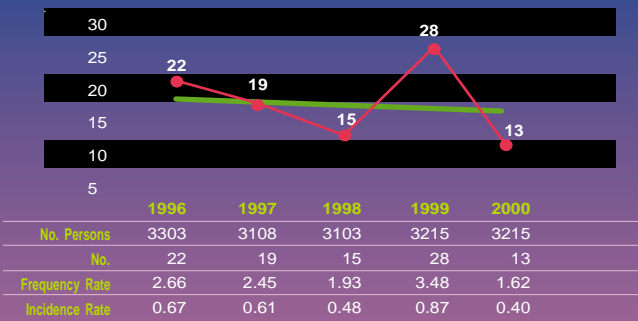


TABLE 4: ALL MINES, COAL MINES, QUARRIES & TUNNELS

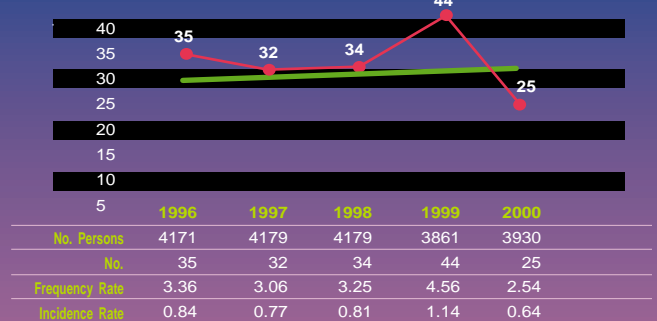


TABLE 5: ALL MINES, COAL MINES, QUARRIES & TUNNELS - MAJOR SERIOUS HARM

DATE	OPERATION	INJURIES SUSTAINED	BRIEF DESCRIPTION OF ACCIDENT	SOURCE*	BODY PART*	NO
7th January	Strongman No 2 Coal Mine	Unconsciousness	Rendered unconscious through lack of oxygen	H	K	1
6th March	L & M Mining, Glenore	Asphyxiation	Inhalation of fumes while welding	H	K	1
7th June	Stockton	Fractured ribs, hypothermia	Fell from base of pressure frame	E	C	1
26th June	Waihi Gold Mine	FATAL	Crushed by runaway truck	B	J	1
10th July	Ferguson Bros	Fractured vertebrae	Slipped and fell from steps on portable crushing plant	D	D	1
7th September	Solid Energy North	Broken ribs	Fell from surface conveyor gantry	E	C	1
6th November	Manapouri Tailrace Tunnel	Bruised back	Fall from TBM hatch	E	I	1

TABLE 6: ALL SURFACE MINES AND QUARRIES CLASSIFICATION BY BODY PART



TABLE 7: ALL MINES, COAL MINES, QUARRIES AND TUNNELS CLASSIFICATION BY BODY PART

